

FERMENTER

BioG-Series Fermenter-Single Vessel 10L

Rapid interchangeability of various different working volume of vessels to facilitate scale-up to meet individual requirements.



1. Condenser

2. Baffle

Easy cleaning used with femovable baffle assembly. four wing of baffle

3. Sparger

4. Clamp

Vessel easily uncouples to facilitate cleaning and autoclaving with simpel clamp

5. Head Plate

Single wall vessel

-Possibility of applying top drive or bottom drive.

-Better space usage on head plate due to Bottom drive method of agitation (choice).

-High temperature shift experiment by direct heating.

-Easily interchangeable vessel (1L,2L,5L, 5L, 7L, 10L)

-Available as air lift reactor(option).

-Air cooled temperature control is possible (option)



Agitation (Top Drive)

Motor : DC 60W, 220V, 60Hz

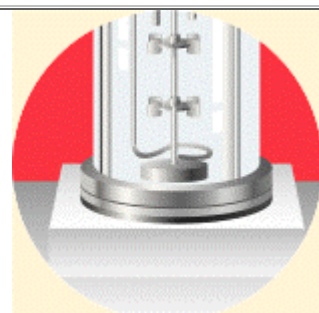
Agitation speed : 50~1500rpm

Foam impeller : Foam breaking, 66mm

Impeller : 6-blades & stages, disc turbine type, 66mm

Baffle : Vertical four plates

Driving type : Top driving type, Mechanical coupling



Agitation (Bottom Drive)

Motor : Magnetic Brushless DC motor, 60W, 220V, 60Hz

Agitation speed : 50~1500rpm

Foam impeller : Foam breaking, 66mm

Impeller : 6-blades & stages, disc turbine type, 66mm

Baffle : Vertical four plates

Driving type : Bottom driving type, Magnetic coupling

Vessel Type	Total Vol (L)	Working Vol (L)	Range (L)	Vessel Diameter (mm)	Vessel Height (mm)	Jacket Diameter (mm)	Jacket Height (mm)
2.5L Double	3.6	2.5	0.5~2.5	130	270	170	205
2.5L Single	3.6	2.5	0.5~2.5	130	270		
5L Double	7.5	5	1.5~5.0	170	330	200	278
5L Single	7.5	5	1.5~5.0	170	330		
7L Double	10	7	2.5~7.0	190	350	220	285
7L Single	10	7	2.5~7.0	190	350		
10L Single	14	10	3.5~10	190	385		

labkorea