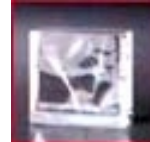


ICE MAKER

ICE CUBER

Ice cubes of a variety of sizes and shapes, and extra durability - KJC model

- This model produces various sizes of ice cubes such as full cube, half cube and cubelet, which are not easily melt away.
- The upside down mechanism of the model produces the clearest cubics with perfectly clean-cut cubic shapes.
- As the model is of cell- type you can get 99.9% pure ice.
- Among the cell-type ice makers ICE CUBER(KJC) is the only one to use nickle-plated evaporator, meaning that it has more durability and stronger anti-corrosive effect than others.
- Compared with other cell-type makers, this model needs less space to fit in, and you can increase its capacity of making cubes by coordinated installation of two or more ICE CUBERS.
- You may buy the model to use in hotels, fresh food shops or factories, sea food shops or markets, pubs, clubs etc.



Cell Type

Full Cube
32×28×28

Half Cube
28×28×14

Cubelet 28×14×14

Process of Ice Making

The city water, once supplied to the water tank, is pumped onto the water plate installed under the vaporator, and injected through tiny holes of the plate water into each cell of the evaporator.

Then the injected pure water begins to freeze from its outer surface first, finally producing pure ice cubes.

The water left over in the evaporator returns to the water tank, repeating the cycle again and again until it is all used to make ice. Once the ice making is over, the remained water is to let out.



KJC200A, KJC300A/ KJB230



KJC300W/ KJB200



KJC200W/ KJB150W

Specifications

| Model | KJC200W | KJC300W | KJC200A | KJC300A |
|---------------------|--------------------|-----------|-------------|-----------|
| Size(W×D×H) | 847×637×505 | | 1000×637×50 | |
| Shape | Cube Ice | | | |
| Electrical Supply | AC220V/50~60HZ/1PH | | | |
| Condenser Unit Type | Water - cooled | | Air Cooled | |
| Ice Capacity | 196kg/day | 280kg/day | 192kg/day | 275kg/day |

| Storage bin | Size(W×D×H) |
|-------------|---------------|
| KJB150W | 847×785×800 |
| KJB200W | 847×800×1000 |
| KJB170A | 1000×785×800 |
| KJB230A | 1000×800×1010 |

labkorea

ICE MAKER

ICE CUBER

Easy to buy, and easier to use and care for - KJV model

- This model excels others in its reasonable price and easy installation.
- As its electric circuit is made by mechanical scheme, there will be less mechanical trouble, and repair will be really easy.
- If your old ice maker does not produce enough ice, the problem can be easily solved by multiple-stage installation of this model.
- Restaurants, hotels, cafes, corridors, meeting rooms are some of the suitable place for this model to fit in.



Full Cube 20×20×20



Vertical Type

Process of Ice Making

In this type the evaporator is installed vertically, and ice is made by dropping water to the surface of the evaporator through the water distributor which is at the top of the evaporator. The rest of the process is same as that of KJC Model.

Some of the distinctive features of this type are less expensive price, smaller volume, and simpler mechanical structure than cell type.



KJV200, KJV300

Specification

| Model | KJV200 | KJV300 |
|---------------------|----------------------------|-----------|
| Size(W×D×H) | 750×620×545 | |
| Storage bin | 750×800×940 | |
| Shape | Cube Ice | |
| Electrical Supply | AC220V/50~60HZ/1PH | |
| Condenser Unit Type | Water-cooled or Air-cooled | |
| Ice Capacity | 205kg/day | 286kg/day |

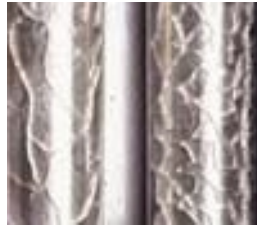
labkorea

ICE MAKER

ICE CUBER

Sturdy and Trouble - Free Ice Maker for Industrial Use - KJI model

- This model produces crushed ice with any size you want from 3 to 15mm.
- Made of good quality stainless steel, it is of great durability.
- As this model is controlled by an automatic system, you don't need to hire any extra staff to take charge.
- Installation is easy, and only minimum expenses are required to run it.
- This is model can be profitably used in such area as sea food processing or storage industry, butchery, chemical industry, construction sites, pharmaceuticals companies, greens or fruits distribution businesses, fishing boats etc.



Cracked Ice

Process of Ice Making

Here ice is made by flowing the ice water onto the inner and outer surfaces of the cylindrical evaporator which is made of two pipes by welding together.

Once the ice gets to the thickness measured, the water supply being stopped, and the ice is cracked by instant over-freezing.

The cracked ice pieces thus made automatically drop down by their own weight when high-pressure and high-temperature gas is sent to the evaporator.

The ice product made in this way is called "cracked ice", or "shell ice" because it looks like a shell..



Specifications

| Model | KJI1000 | KJI2000 | KJI3000 |
|--|------------------------------|---------------|---------------|
| Size(W×D×H) Condensing Unit is excluded | 710×500×1460 | 1230×600×1670 | 1540×600×1670 |
| Shape | Cracked Ice | | |
| Electrical Supply | AC380V/60HZ/3PH | | |
| Condenser Unit Type | Water - cooled or Air Cooled | | |
| Ice Capacity | 1ton/day | 2ton/day | 3ton/day |

labkorea